

Creating C- Suite *Members*



Helping newly baptized members become integrated into your church

Pastor Tiffany A. Brown
Associate Pastor and Discipleship Director
Revision Church Atlanta

From *Baptism* To...




Where do you want your newly baptized member to end up? Intentionally or by default, people are going to end up somewhere.

Meet Seven

- Faithfully did Bible studies
- Joined through Profession of Faith
- A contagious Christian!
- Small Group Leader
- Prayer ministry



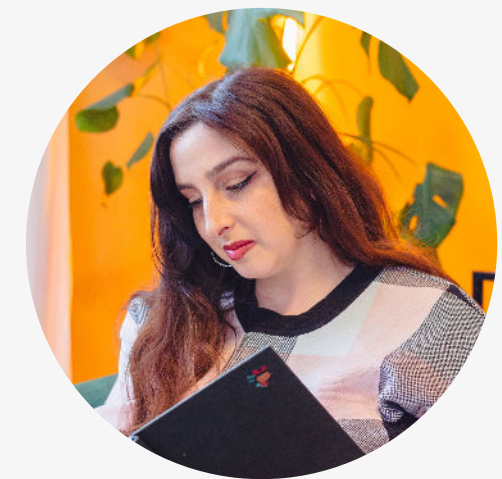


You can make *a difference!*

What makes the difference between one new disciple
and another?



DISCIPLE A



DISCIPLE B

The C-suite



CEO

Chief Executive
officer

CMO

Chief Marketing
Officer

CCO

Chief Commercial
Officer

CPO

Chief Product
Officer



Church C-suite

CEO

Chief Executive
officer

CMO

Create Membership
Orientation

CCO

Create
Connections
Organically

CPO

Connect Personally
Often

CMO

Create Membership *Orientation*



Welcome to *Our* Church



Our Vision *and Mission*



Church Vision

Building loving communities
where ALL people
encounter Jesus and are
empowered as agents of
restoration and hope



Church Mission

Real Love restoring the
world through you and me

Getting to know *Us*

Set expectations.

Show what membership looks like in
your context.

HOW MANY MEMBERS

THE BOARD MEMBERS



HOW TO GIVE

CORE VALUES




Discover Your Spiritual Gifts

Each new member completes a
Spiritual Gifts Assessment

 MENU 

Quick & Honest

The gifts test is designed to be taken quickly during a single sitting, and typically takes 5 minutes to complete. We encourage you to be open and honest. Enjoy!



First name

Last name

Email

1. I like organizing services and events.

1

2

3

4

5

Never

Always

2. I enjoy starting new churches.

1

2

3

4

5

Never

Always

3. Working with my hands is fun for me.

1

2

3

4

5

Never

Always

4. I can tell when someone is insincere.

1

2

3

4

5

Never

Always

5. I pray for the lost daily.

1

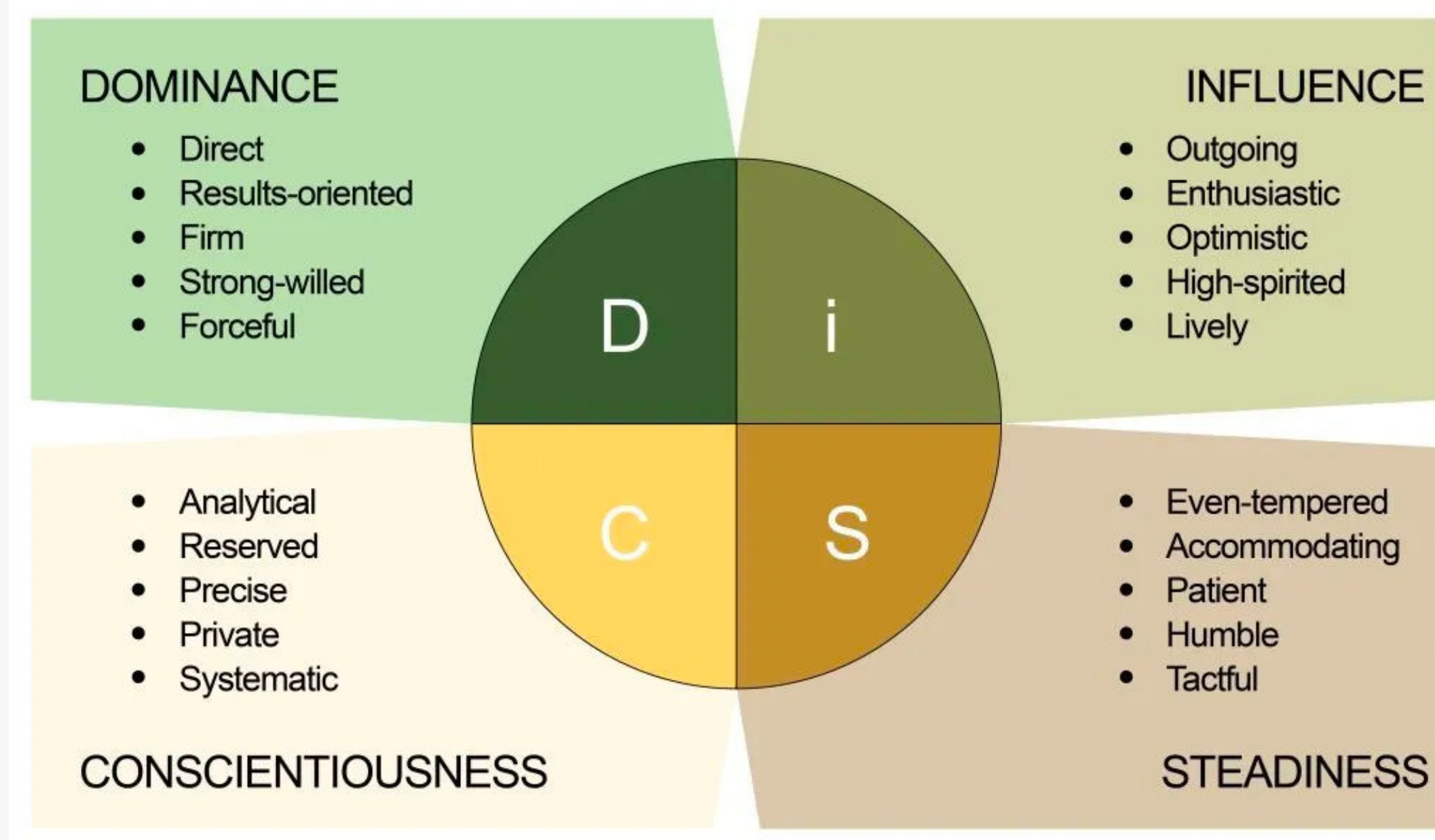
2

3

4

5

Personality Assessment



CCO

Create Connections *Organically*



Small Groups

Small groups are a group of about 8-12 people that meet for consecutive weeks for usually 8-10 weeks and grow authentically in Christ.



Small Groups

- Small groups close after 2-3 weeks
- Your group does life together
- Your group stays in touch
- It creates a safe space to share
- It creates a space to grow in Christ through vulnerability and authenticity



Small Groups *Serve*

When our newest members work in partnership with the community and for the community, it's a reminder that our churches do not exist to serve ourselves.



SELAH

A VOLUNTARY AND INTENTIONAL PAUSE FOR REFLECTION AND CONNECTION.

Selah is a space created to give people the opportunity to intentionally pause and connect in homes during sabbath hours.



CPO

Connect Personally Often



Meet Sandy

- Faithfully did Bible studies
- Joined through Profession of Faith
- Engaged in Small Groups and Selah
- Was nominated to serve on our Selection Team (Nominating Committee)



Meet Jen

- CEO of three hospitals in Atlanta, Georgia

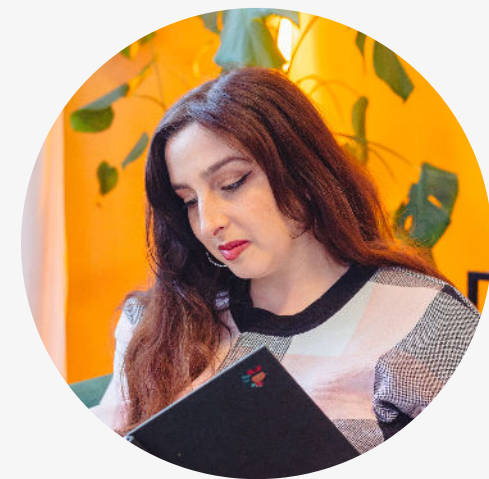




You make
the difference!



DISCIPLE A



DISCIPLE B