

# Mission to the Cities Initiative Report

E. Douglas Venn  
GC Global Mission Urban Center  
GC Annual Council 2022



MISSION to the **CITIES**



Photo Credit: Arnold Petersen, used under the terms of GettyImages Premium Access



# Visit our Websites!



Mission to the Cities Initiative  
[missiontothecities.org](http://missiontothecities.org)



Global Mission Urban Center  
[URBAN.GlobalMissionCenters.org](http://URBAN.GlobalMissionCenters.org)





**GLOBAL MISSION**  
Urban Centers of Influence

**Tools to Get You Started**

Are you ready to reach an unreached people group in your city through an Urban Center of Influence? Learn what that means, and access tools to help you assess your community's needs. Also, find out how to create a viable business plan, and find funding for your center.

**Urban Centers of Influence**  
**urbancenters.org**



Adventist Mission Presents **I Want This City**

The Bomb | S1E1

**Get Involved**

1. Visit [facebook.com/IWantThisCity](https://facebook.com/IWantThisCity) and like the page to get updates, behind-the-scenes stories, and much more!
2. Learn why Pastor Doug said, "This show will make people upset."
3. Visit [AdventistVolunteers.org](https://AdventistVolunteers.org) to sign up to volunteer for a year in Bangkok or another city.

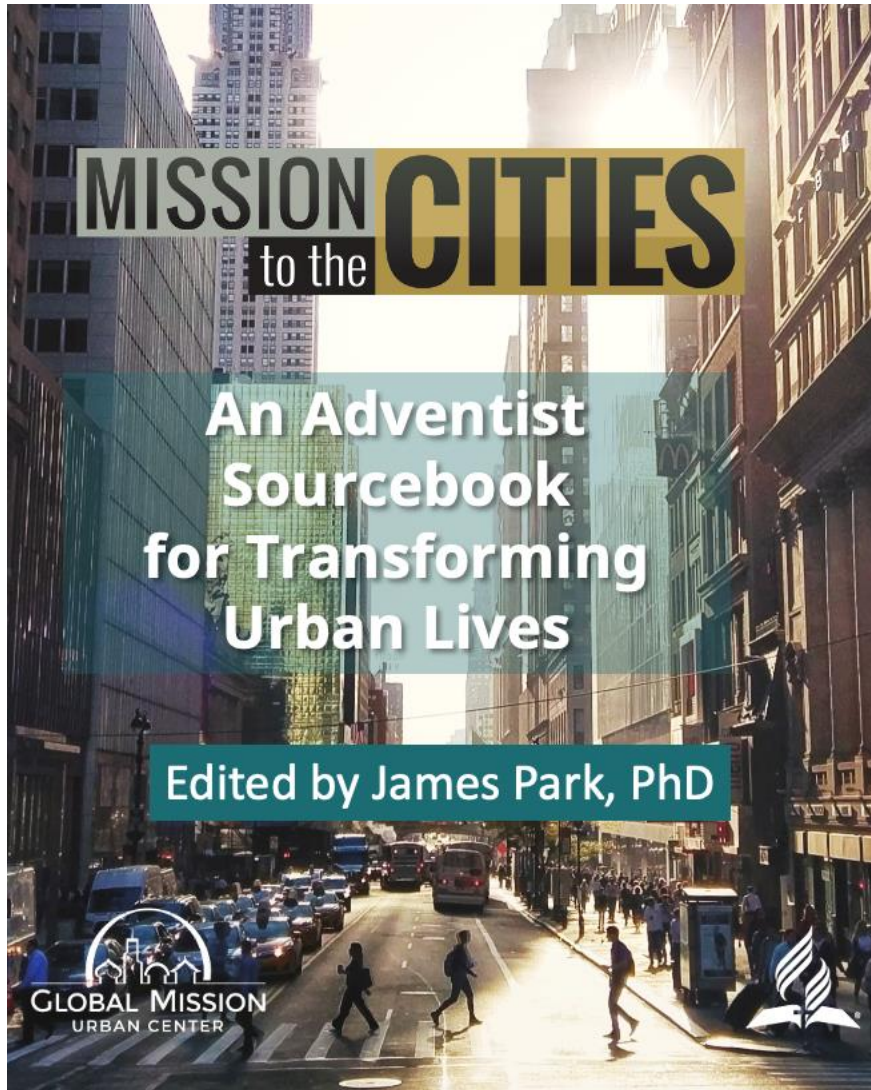
**I Want This City! TV Show**  
**IWantThisCity.org**



**Visit our Websites!**



# Resource Book for Mission to the Cities

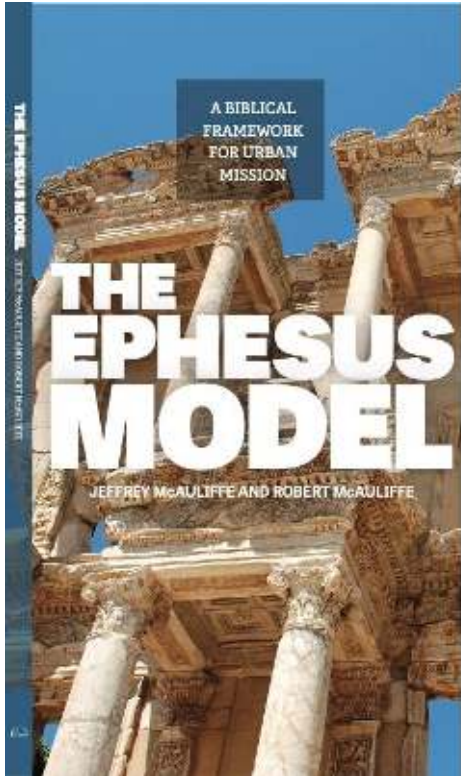


Link for new ebook  
available soon at  
[missiontothecities.org/resources](https://missiontothecities.org/resources)

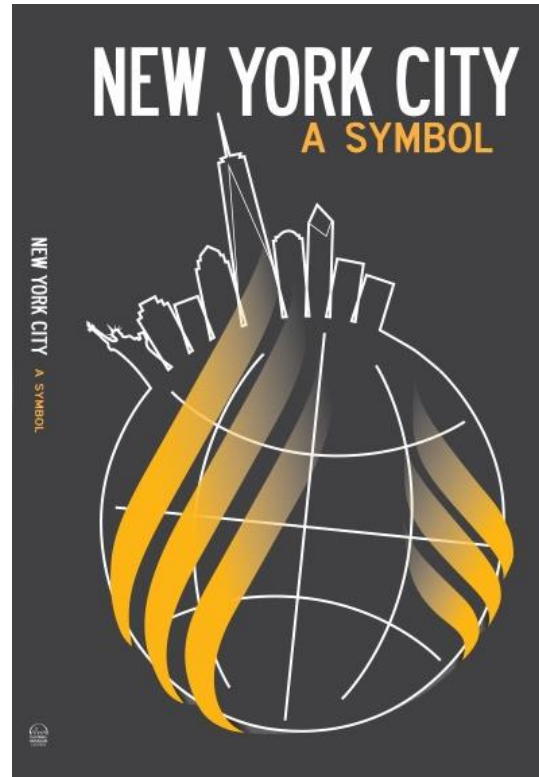




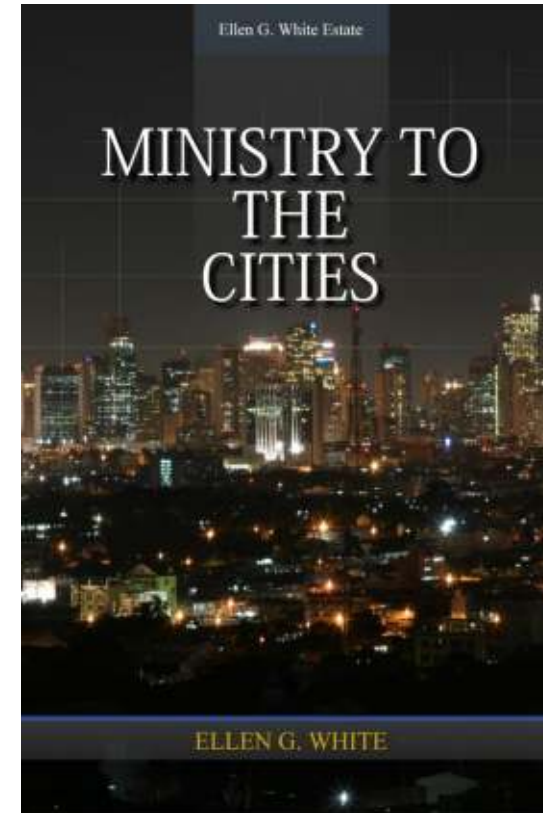
# Resource Books for Mission to the Cities



**The Ephesus Model:**  
A Biblical Framework for  
Urban Mission  
EN ES PT



**New York City: A Symbol**  
EN ES KR PT



**Ministry to the Cities**  
By Ellen G. White  
EN ES FR PT KR RU



# I have a problem! Something's wrong



Photo Credit: angelp, used under the terms of GettyImages Premium Access





# Something's wrong



Photo Credit: Ca-ssis, used under the terms of GettyImages Premium Access



# Heaven's Diagnosis Dx

## Isaiah 58:7

<sup>7</sup> *Is it not to share your bread with the **hungry**,  
And that you bring to your house the **poor**  
who are cast out; when you see the **naked**,  
that you cover him, and not hide yourself  
from your own flesh?*





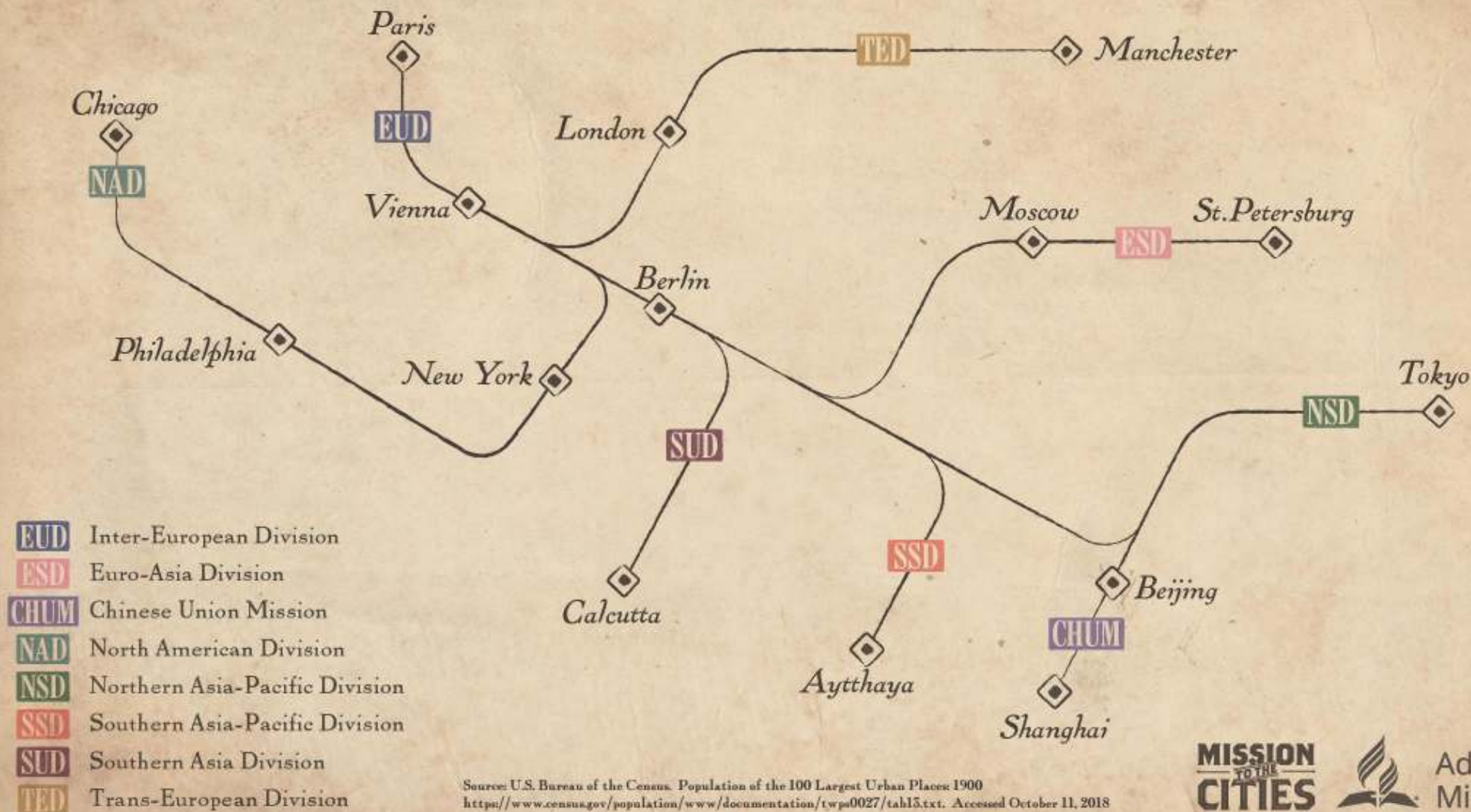
# Heaven's Diagnosis Dx

## James 1:27

<sup>27</sup> Pure religion and undefiled before God and the Father is this, to visit the **fatherless** and **widows** in their affliction, and to keep himself unspotted from the world.



# Cities of a Million or More c. 1900



Sources: U.S. Bureau of the Census. Population of the 100 Largest Urban Places: 1900  
<https://www.census.gov/population/www/documentation/twps0027/tah15.txt>. Accessed October 11, 2018

MISSION  
TO THE  
CITIES



Adventist  
Mission



# City Missions Report 1886

REPORT OF CITY MISSIONS FOR YEAR ENDING OCT. 1, 1886.

PERMANENT MISSIONS.	No. of Inhabitants.	No. experienced workers employed.	No. of persons who came to mission for instruction.	No. who have left to enter other fields.	Running expenses, including rent and board of workers.	Value of provisions donated.	Received for board.	Inventory of mission furnishings.	Proportion of time the workers have devoted to canvassing for our publications.	Lecture room or hall for public meetings.	No. public services held.	Average attendance of unbelievers.	No. persons employed in ship-work.	Value of reading matter sold by them.	No. ships visited.	No. ships regularly supplied with signs or other denominational papers.	No. ships regularly supplied with <i>Good Health</i> or other health journals.	No. pages distributed on ships free.	No. papers distributed free.	No. Bible-readings held.	Total attendance.	No. readers present.	No. yearly subscriptions obtained for periodicals.	No. short term subscribers obtained for periodicals.	Total value of reading matter sold.	Total amount of free distributions of reading matter.	No. who have embraced the truth during the year.	Proportion of the city over which the work has been carried.	The interest at the present time.	
Albany, N. Y.	90903	3	8	6	\$ 976 22	\$ 242 23		\$523 65	3-5	Yes.	300	3	2	\$10 00	194	3				282			178	390	\$709 11	\$92 00	3	All	Good.	
Brooklyn, N. Y.	566689	5	10	5	1053 82	50 86		293 48	1-4	Yes.	77	20	2	110 41	2957	146	75	44017	70000	661			64	30	537 60	*3750	17	Small	Very good.	
Boston, Mass.	362535	2			898 00	89 04		150 00	2-10	Yes.	156		1	253 23	500	20	20	147152	9273	100			65	34	411 92	*963088	10	1-8	Good.	
Buffalo, N. Y.	225000	3	3	3	848 85	519 99		300 00		Yes.	156	5							200	240			12		200 00	\$50 00	15	1-8		
Chicago, Ill.	650000	5	29	20	1689 21	267 09	671 57	502 66	1-5	Yes.	210	8	1	65 00	490	8	2		5400	2050			22	39	354 99		32	1-5	Good.	
Chicago (Scandinavian.)		4	16	14	750 46	464 25		50 00	1-2	Yes.	137	75	1	9 13	30			6748	305	610			130		304 55	\$18 75	26	N&W	Good.	
Cleveland, Ohio.	214013	2	6	1	544 15	20 60		174 00		Yes.	148									467			20		75 00		5	1-20	Excellent.	
Des Moines, Ia.	22408	4	17	5	1670 31			292 29		Yes.	58	10								900			13		33 62	*\$275	26	1-6	Good.	
Denver, Col.	60000		6	1	469 30	27 35		441 95	1-10	No.									467							*\$127	13	1-10	Good.	
E. Portland, Or.	4500	3	2	2	100 00			100 00		Yes.	156				365	12				100								5		Excellent.
Grand Rapids, Mich.	55000	2	19		495 16	55 00		682 53		Yes.	16	50								615					66 11		10	1-8	Very good.	
Indianapolis, Ind.	75074	2	6	2	616 13	101 00		200 00	1-4											551			10		30 26	\$12 50	8	1-20	Good.	
Kansas City, Mo.	53813	3	2	1	550 00	162 45				Yes.													50		0		24	Small	Very good.	
Lincoln, Neb.	18000	3	5	4	409 03	409 00			1-5	Yes.	300	100								783			68		198 00	\$20 00	43	1-5	Good.	
Minneapolis, Minn.	140000	3	8	2	402 86	40 00			1-2	Yes.	20	25								980			20	175	1248 58		20	1-10	Good.	
New Orleans, La.	216140	3	3	1	496 00	142 81	155 28	75 00	1-3	Yes.	200		1	40 00					7500	340			72	197	220 00		20	1-50	Fair.	
Philadelphia, Pa.	846981	4	1	3	1081 92	71 66			1-2	Yes.	125	475		23 74	150				1042	756			62	344	511 51	\$2441	10	1-4	Good.	
Providence, R. I.	104550	2	1		493 42	72 43	122 85	100 00	4-5	No.	100					5	5			300			12	67	445 39	*143440	4	1-3	Fair.	
Pittsburgh, Pa.	175000	2	3	2	681 63	81 68		509 85	1-4	Yes.	112	Few.			4				690	164			19	211	135 40		15	Small	Good.	
San Francisco, Cal.	300000	5	15	4	136 00	25 00	122 75	250 00	None.	No.			1	126 33	1019	35		57649	12274	1180			10		5 00	*3049	13	Small	Very good.	
St. Paul, Minn.	120000	4	13	6	815 24	44 00		268 00	1-5	Yes.	76	5								1061			117	10	292 00	\$36 00	12	1-20	Good.	
St. Louis, Mo.	350552	2	1		509 82	81 78				Yes.	100									934			12	6	142 84	\$30 00	20	Small		
Syracuse, N. Y.	68000	2	4	5	1020 10	15 00		5 00	1-4	Yes.	100	20								375			46	40	245 00	\$26 00	25		Very good.	
Topeka, Kan.	22800	1	12	8	447 08			65 48		No.										785			14		70 00		60	Small	Very good.	
Toledo, O.	65000	2			123 10	117 28		4 82		No.										207					10 00		3			
Washington, D. C.	225000	4			820 62	690 09			1-2	Yes.	46	Few.								845			139	59	577 01	\$38 00	7	Small	Excellent.	



# NYC 1894 to 1904

## MissionType

- ▲ Evangelistic Meetings (15)
- 🚢 Ship Mission (4)
- ✚ Congregation (20)
- 🏠 Staff Housing (10)
- Christian Help Bands (1)
- Training (8)
- 🟩 Urban Center of Influence (13)



MISSION  
to the CITIES



0 2 4 8 Miles

Map made by Jerry Chase, Historical GIS data research by Hannah Klingbeil

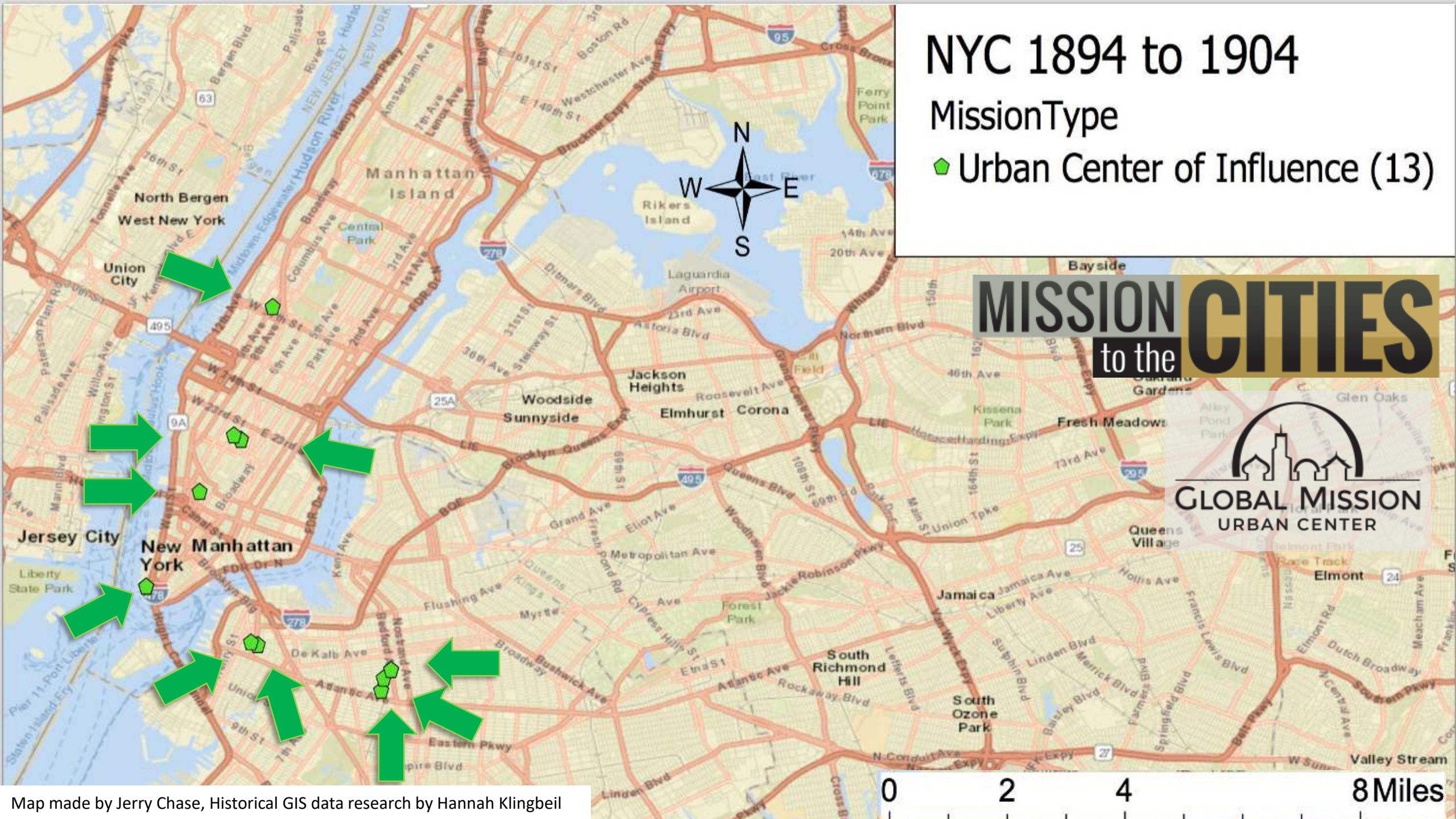
Sources: esri, HERE, Garmin, USGS, Intermap, INCREMENT P, NRCan, Esri Japan, METI, Esri China (Hong Kong), Esri Korea, Esri (Thailand), NGCC, © OpenStreetMap contributors, and the GIS User Community



# NYC 1894 to 1904

MissionType

◆ Urban Center of Influence (13)



MISSION to the CITIES





# Vegetarian Restaurants in New York City 1894-1904

Carl Rasmussen, Proprietor  
First Vegetarian Restaurant  
170 Fulton Street, Brooklyn, New York City



Photo credit: *Good Health*, April 1902, volume 37, number 4, page 57

Edward W. Coates, Proprietor  
Mrs. Evora Bucknum Perkins, In Charge  
The Laurel Vegetarian Restaurant  
11 West 18<sup>th</sup> Street, Manhattan, New York City



Photo credit: The Henry Voigt Collection of American Menus. Used with permission





# MISSION TO THE CITIES PRAYER MAP

## Pray Your Way Around the World!

There are 580+ cities of a million or more worldwide. They've been laid out here to look like a subway map. The subway lines of varying colors represent the regions of the world church. The stops, or dots, on each line are the cities of a million or more within each region. Please pray for one city each day and check them off as you go! ✓

### REGIONS OF THE ADVENTIST CHURCH

- ECO** East-Central Africa Division
- ESA** Euro-Asia Division
- CHUM** Chinese Union Mission
- EUD** Inter-European Division
- IAD** Inter-American Division
- IF** Israel Field
- MENA** Middle East & N. Africa Union Mission
- NAD** North American Division
- NSD** Northern Asia-Pacific Division
- SAD** South American Division
- SID** Southern Africa-Indian Ocean Div.
- SPD** South Pacific Division
- SSD** Southern Asia-Pacific Division
- SLD** Southern Asia Division
- TED** Trans-European Division
- WAD** West-Central Africa Division

### LEGEND

-  Cities with 1,000,000+

+500 urban areas  
with a population  
of more than 1 million

Available at [missiontothecities.org](http://missiontothecities.org)



# The Role Urban Centers of Influence have in Sharing The Three Angels' Messages

In connection with our **city missions** there should be suitable rooms where those in whom an interest has been awakened can be gathered for instruction.

Testimonies for the Church Vol. 9, page 11, 1909  
Counsels on Diet and Foods, page 450.4



Photo Credit: E. D. Venn





# The Role Urban Centers of Influence have in Sharing The Three Angels' Messages

All that is done should bear favorable witness to the Author of truth, and should **properly represent the sacredness and importance of the truths of the third angel's message.**

Testimonies for the Church Vol. 9, page 11, 1909  
Counsels on Diet and Foods, page 450.4



Photo Credit: E. D. Venn



# Heaven's Prescription Rx

Revelation 3:19 NKJV

<sup>19</sup> As many as I **love**, I **rebuke** and **chasten**. Therefore be zealous and repent.





# Heaven's Prescription Rx

## Revelation 14:6-12



# Something's wrong



Photo Credit: Ca-ssis, used under the terms of GettyImages Premium Access





A close-up photograph of two adult Ixodes ricinus ticks. They are reddish-brown with a lighter, patterned scutum on their dorsal side. They are positioned on a dry, light-colored twig. The background is a soft, out-of-focus green.

**Ticks**  
**garrapata**  
**Ixodes ricinus**  
**किलनी** เห็บ  
**carrapato** 蜱  
**тикать** **tique**









# Heaven's Treatment Tx

“When the cities are worked as God would have them, the result will be the setting in operation of a mighty movement such as we have not yet witnessed.” Medical Ministry, p. 304



# What's inside?

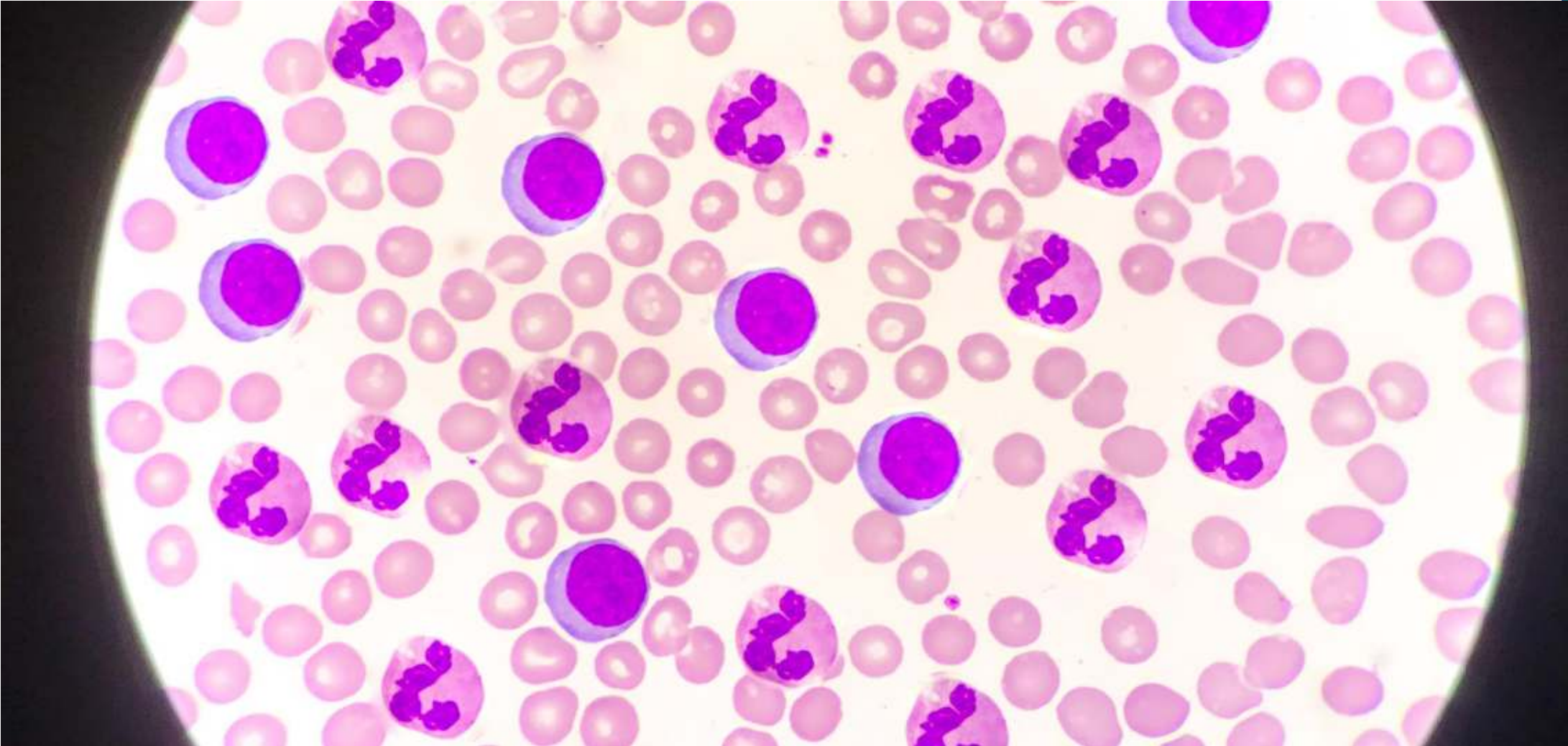


Photo Credit: toeytoey2530, used under the terms of GettyImages Premium Access

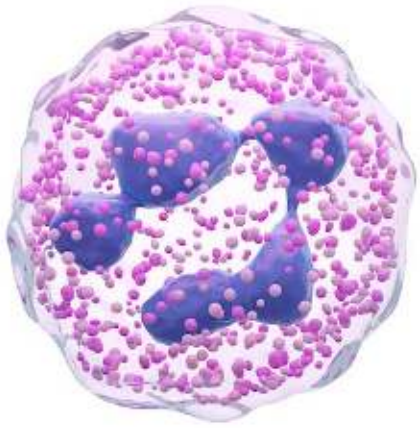




# Heaven's Treatment Tx for the cities today

Comprehensive Health Ministry  
Education Ministry  
Publishing – Communication Ministry  
Entrepreneurship  
Gospel Ministry

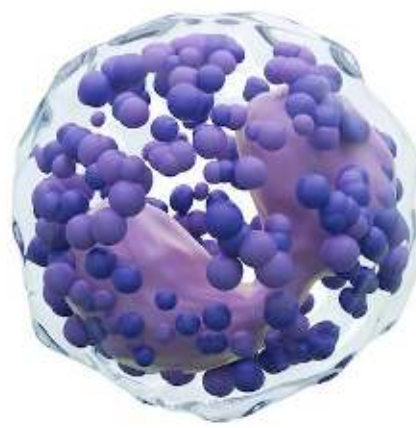




Neutrophil



Eosinophil



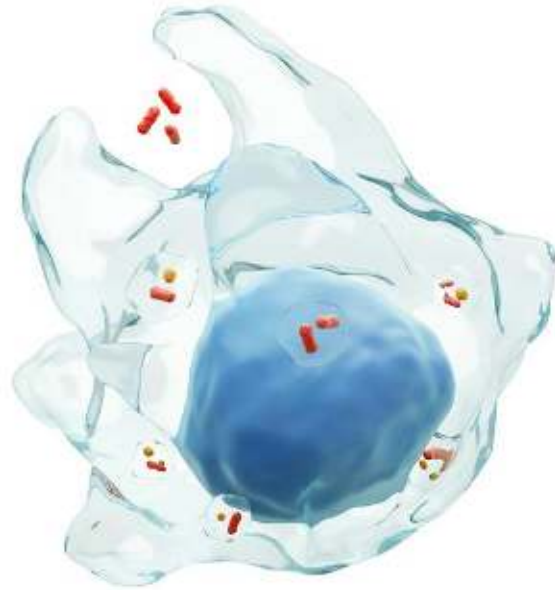
Basophil



Lymphocyte



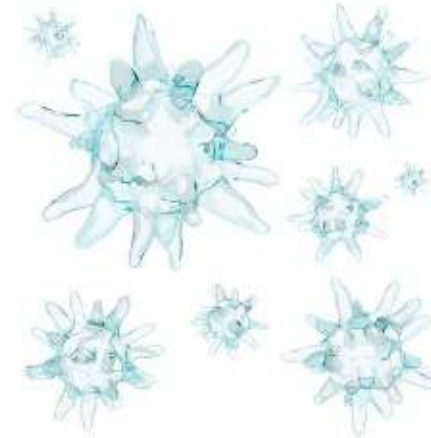
Monocyte



Macrophage



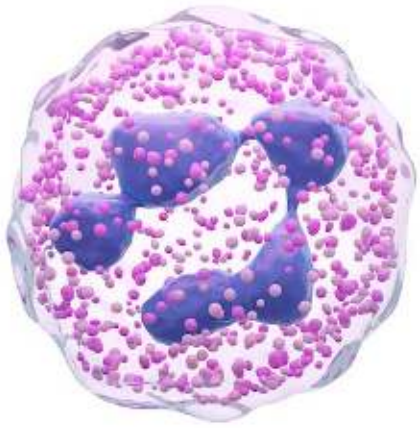
Erythrocyte



Platelets



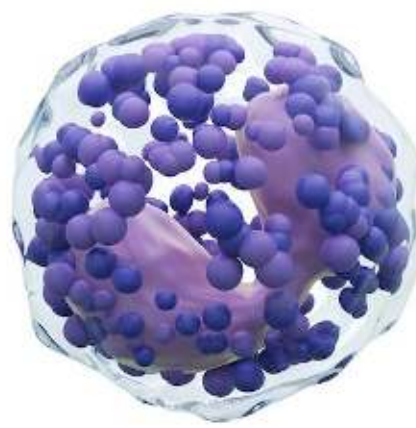




**Mental Health  
Clinic**



**Job Training Center**



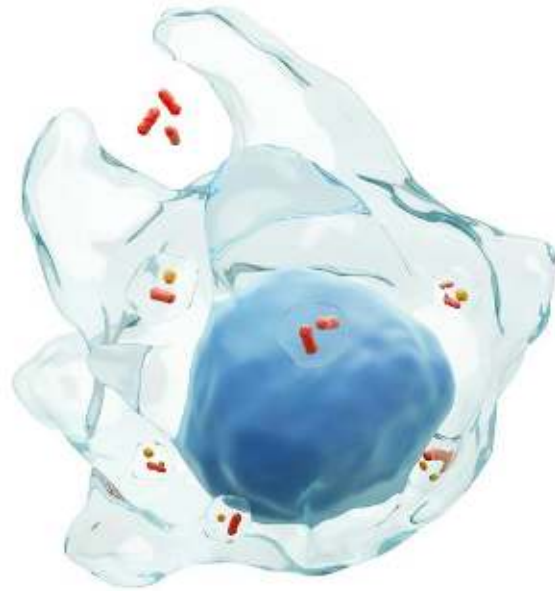
**Health Food Store**



**Primary School**



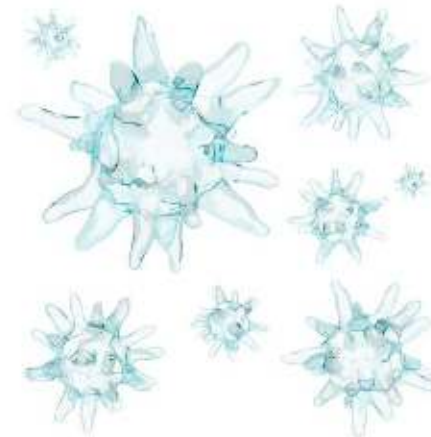
**Vegetarian Café  
& Book store**



**Radio station**



**New Groups of  
Believers**



**Lifestyle Wellness Center**

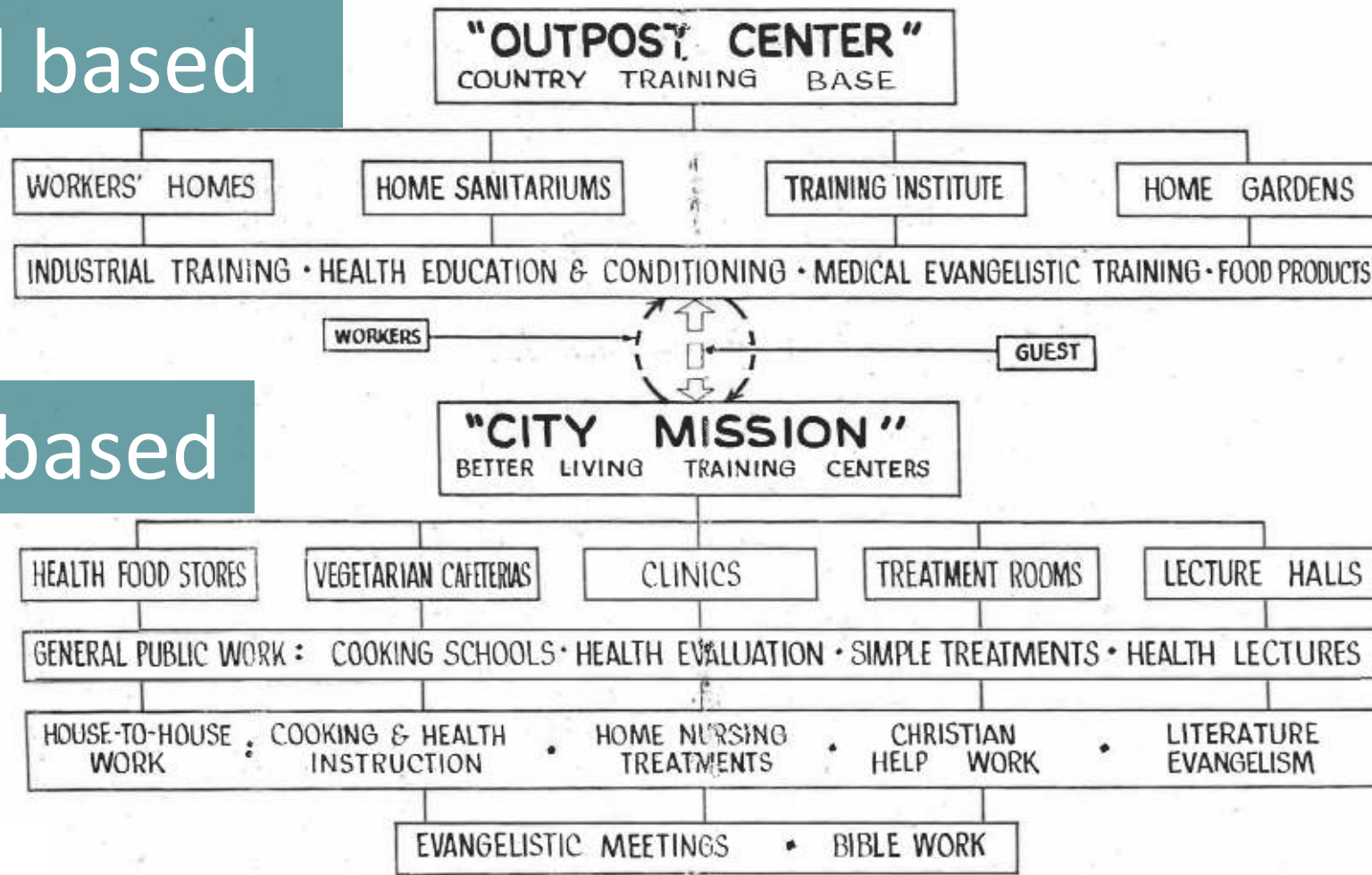
Photo Credit: stockdevil, used under the terms of GettyImages Premium Access



# A Conceptual Framework for Urban Mission

OUT: Rural based

IN: Urban based





# How about our cities?

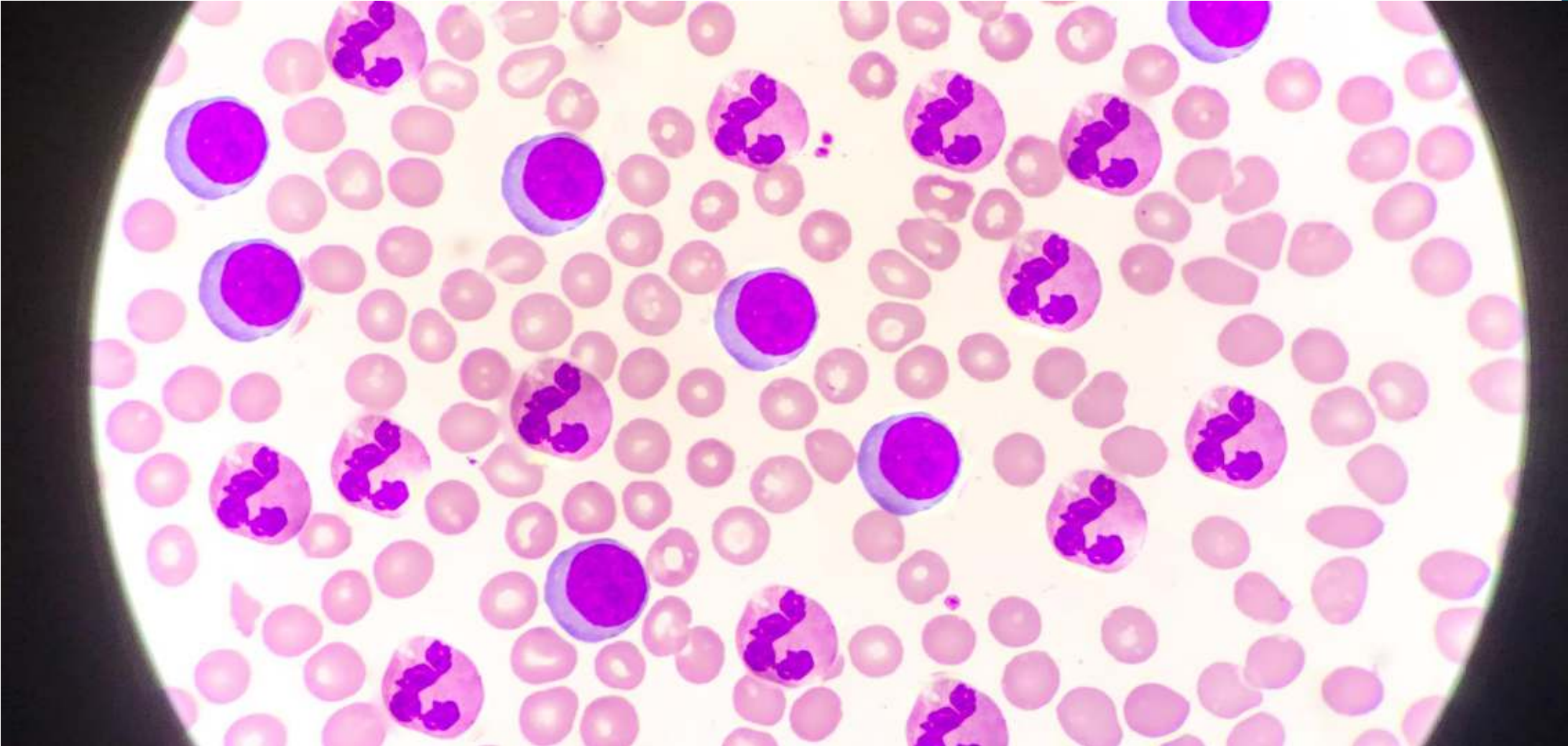


Photo Credit: toeytoey2530, used under the terms of GettyImages Premium Access



# Casting a Vision for Mission to the Cities Initiative Data Reporting

## Using the Power of Existing Church Systems

- General Conference OrgMast
- Jordan Educational Data
- Global Mission's church planting projects in Mission Priority System
- Global Mission funded Urban Centers of Influence





# Mission to the Cities Data Reporting Timeline

## 1. Annual Council 2022:

Cast a vision for using existing Church Systems for MTTC Data Report

## 2. Spring Meeting 2023:

Presentations by Early Adopters Divisions / AF based on MTTC Data Collection Systems

## 3. Annual Council 2023:

Global MTTC report



# Next Steps (for Divisions / AF)

1. Provide MTTC Permission to Use Your Church System Reports
2. Review MTTC Information Currently in the Church Systems
3. Update Your Entity's Information in the Church Systems
4. Approve Your MTTC's Report
5. Prepare Dynamic Presentations on the Need and Progress in Your Urban Areas





# MTTC Data Case Study: Gauteng Johannesburg-Pretoria South Africa



Photo Credit: Arnold Petersen, used under the terms of GettyImages Premium Access



# Johannesburg-Pretoria

**DRAFT**

## MTTC Urban Area Analysis

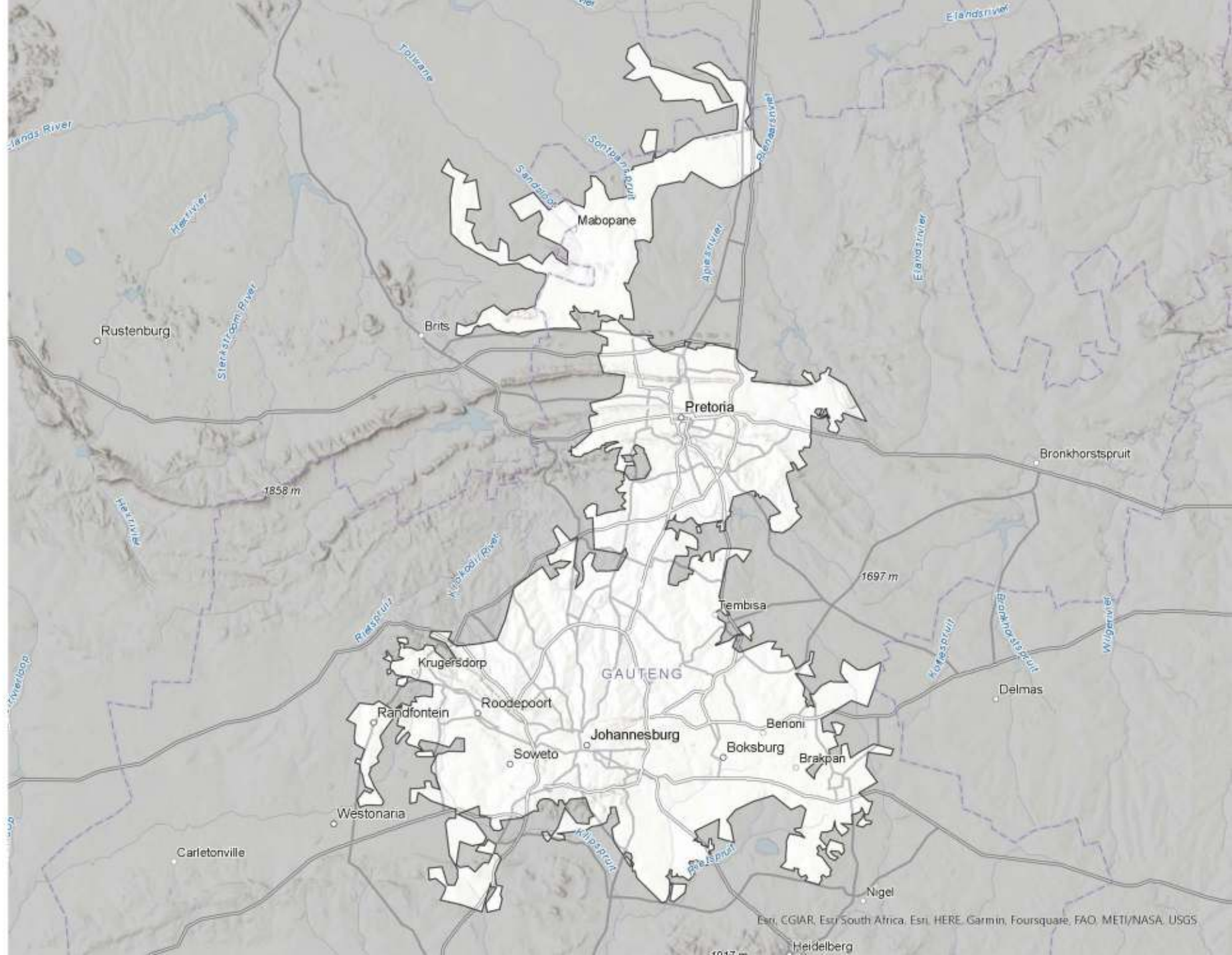
Urban Area

**MISSION**  
to the **CITIES**

### Data Sources:

- \* Mission to the Cities Data Collection System, September 2022
  - \* Heatmap population (2015) © European Union, 1995-2015, ([http://cidportal.jrc.ec.europa.eu/ftp/jrc-opendata/GHSL/GHS\\_POP\\_GPW4\\_GLOBE\\_R2015A](http://cidportal.jrc.ec.europa.eu/ftp/jrc-opendata/GHSL/GHS_POP_GPW4_GLOBE_R2015A))
  - \* Urban area population and shapes by Demographia World Urban Areas, 2022 ([demographia.com](http://demographia.com))
- Map prepared September 12, 2022

0 12.5 25 50 Kilometers





# Johannesburg-Pretoria

**DRAFT**

## MTTC Urban Area Analysis

Urban Area

Population Density

Sparse  
Dense

**MISSION**  
to the **CITIES**

Data Sources:

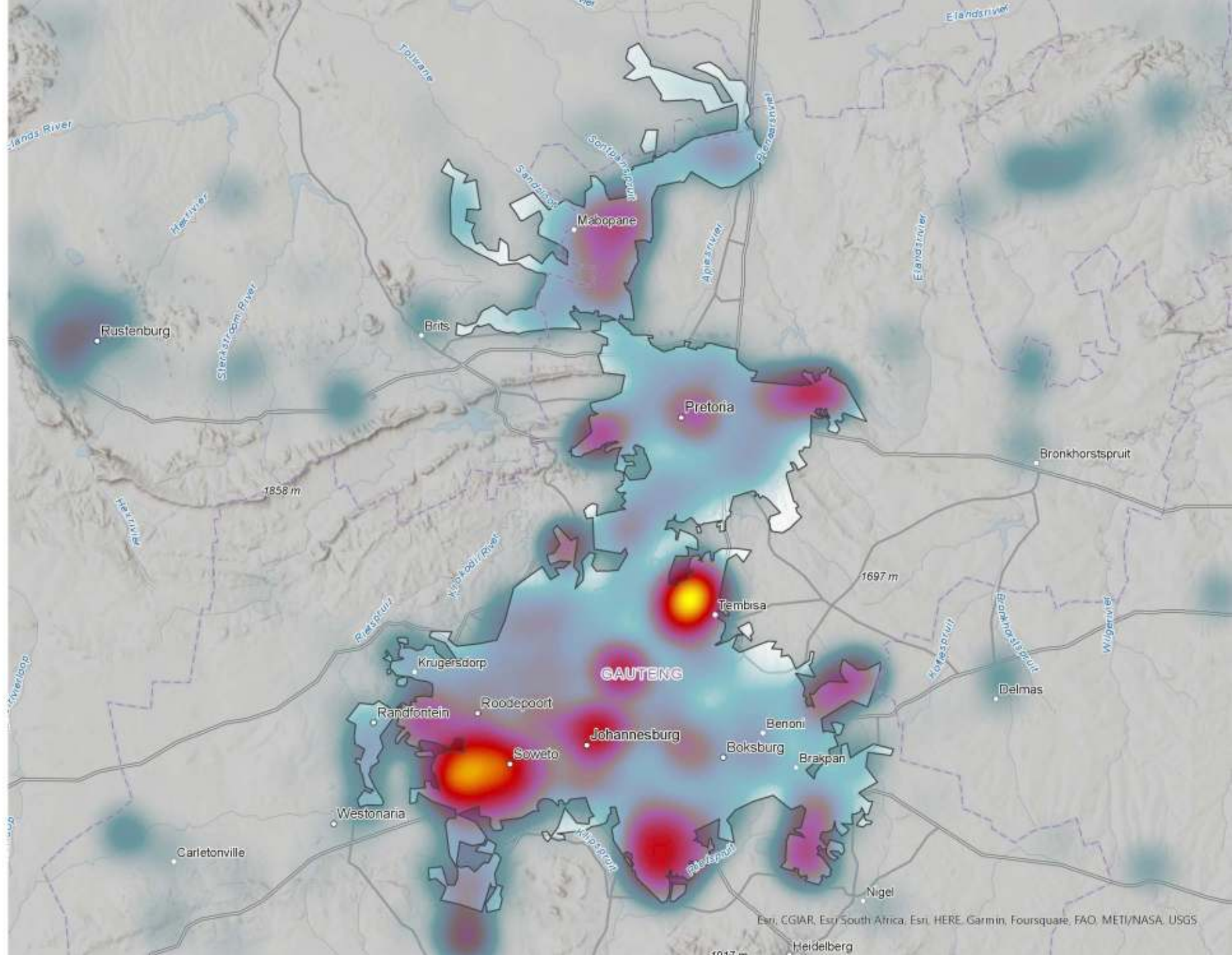
\* Mission to the Cities Data Collection System, September 2022

\* Heatmap population (2015) © European Union, 1995-2015,  
([http://cidportal.jrc.ec.europa.eu/ftp/jrc-opendata/GHSL/GHS\\_POP\\_GPW4\\_GLOBE\\_R2015A](http://cidportal.jrc.ec.europa.eu/ftp/jrc-opendata/GHSL/GHS_POP_GPW4_GLOBE_R2015A))

\* Urban area population and shapes by Demographia World  
Urban Areas, 2022 (demographia.com)

Map prepared September 12, 2022

0 12.5 25 50 Kilometers






# Johannesburg-Pretoria

**DRAFT**

## MTTC Urban Area Analysis

 Urban Area

### SDA Footprint by Entity Category

-  Administration (3)
-  Congregations (225)
-  Education (8)
-  Medical (8)
-  Other (2)

### Population Density

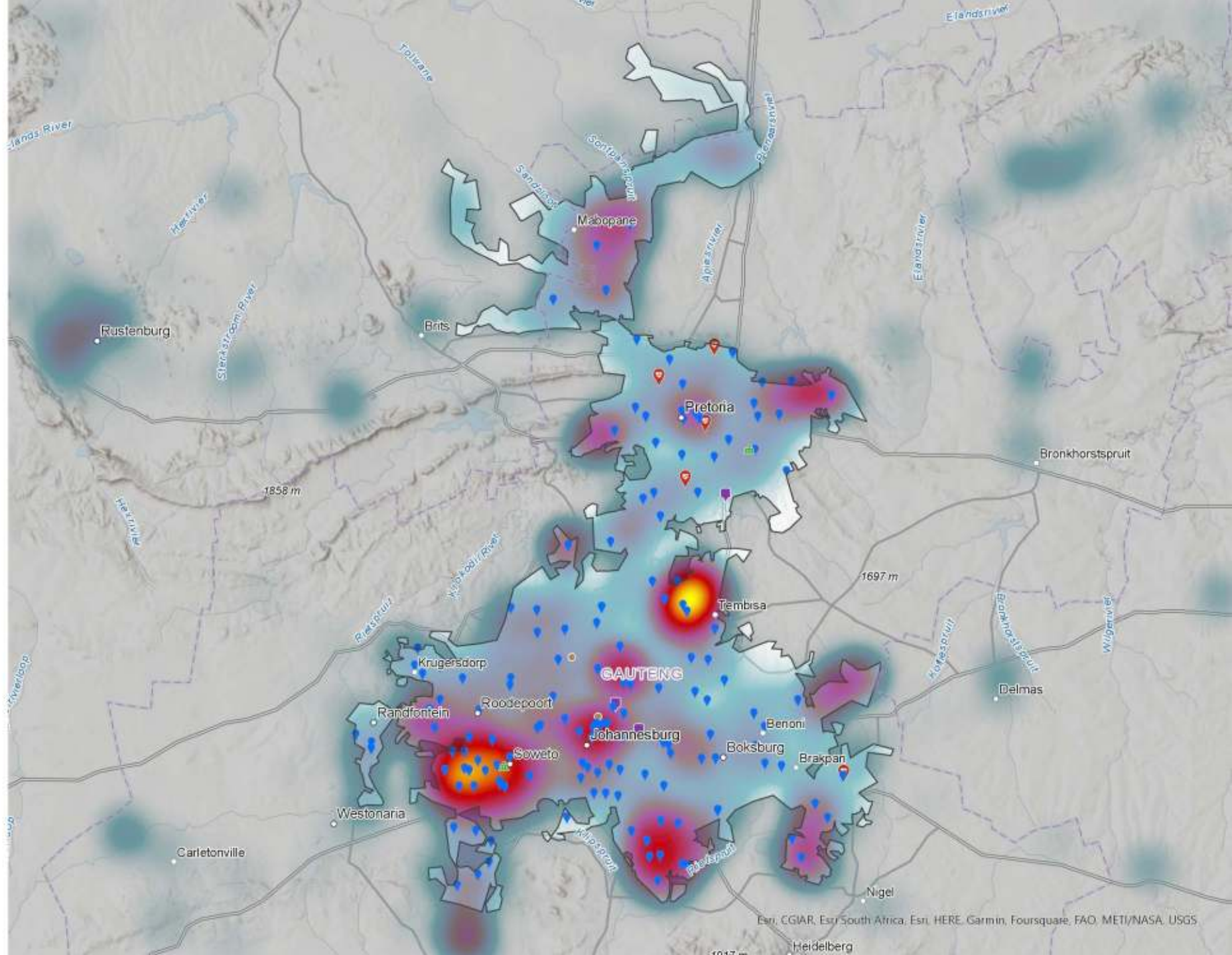
 Sparse  
Dense

**MISSION**  
to the **CITIES**

#### Data Sources:

- \* Mission to the Cities Data Collection System, September 2022
  - \* Heatmap population (2015) © European Union, 1995-2015, ([http://cidportal.jrc.ec.europa.eu/ftp/jrc-opendata/GHSL/GHS\\_POP\\_GPW4\\_GLOBE\\_R2015A](http://cidportal.jrc.ec.europa.eu/ftp/jrc-opendata/GHSL/GHS_POP_GPW4_GLOBE_R2015A))
  - \* Urban area population and shapes by Demographia World Urban Areas, 2022 ([demographia.com](http://demographia.com))
- Map prepared September 12, 2022

0 12.5 25 50 Kilometers





# Mission to the Cities Ratios for Gauteng SA

## I Will GO Mission KPI's 1.1, 1.7, 2.3, 2.4, 2.9

Population	Congregations	Ratio
14,586,000	225	64,827

Data Source: Mission to the Cities Data Collection System  
September 12, 2022.

Photo Credit: Arnold Petersen, used under the terms of GettyImages Premium Access





# Mission to the Cities Ratios for Gauteng SA

## I Will GO Mission KPI's 1.1, 2.3, 2.4, 6.1

Population	Educational Institutions	Ratio
14,586,000	225	7,293,000

Data Source: Mission to the Cities Data Collection System  
September 12, 2022.

Photo Credit: Arnold Petersen, used under the terms of GettyImages Premium Access





# Mission to the Cities Ratios for Gauteng SA

## I Will GO Mission KPI's 2.4, 7.2, 9.1

Population	Medical Institutions	Ratio
14,586,000	8	1,823,250

Data Source: Mission to the Cities Data Collection System  
September 12, 2022.

Photo Credit: Arnold Petersen, used under the terms of GettyImages Premium Access





# Mission to the Cities Interview Vision for Gauteng

Harrington S. Akombwa

President

Southern Africa-Indian Ocean Division

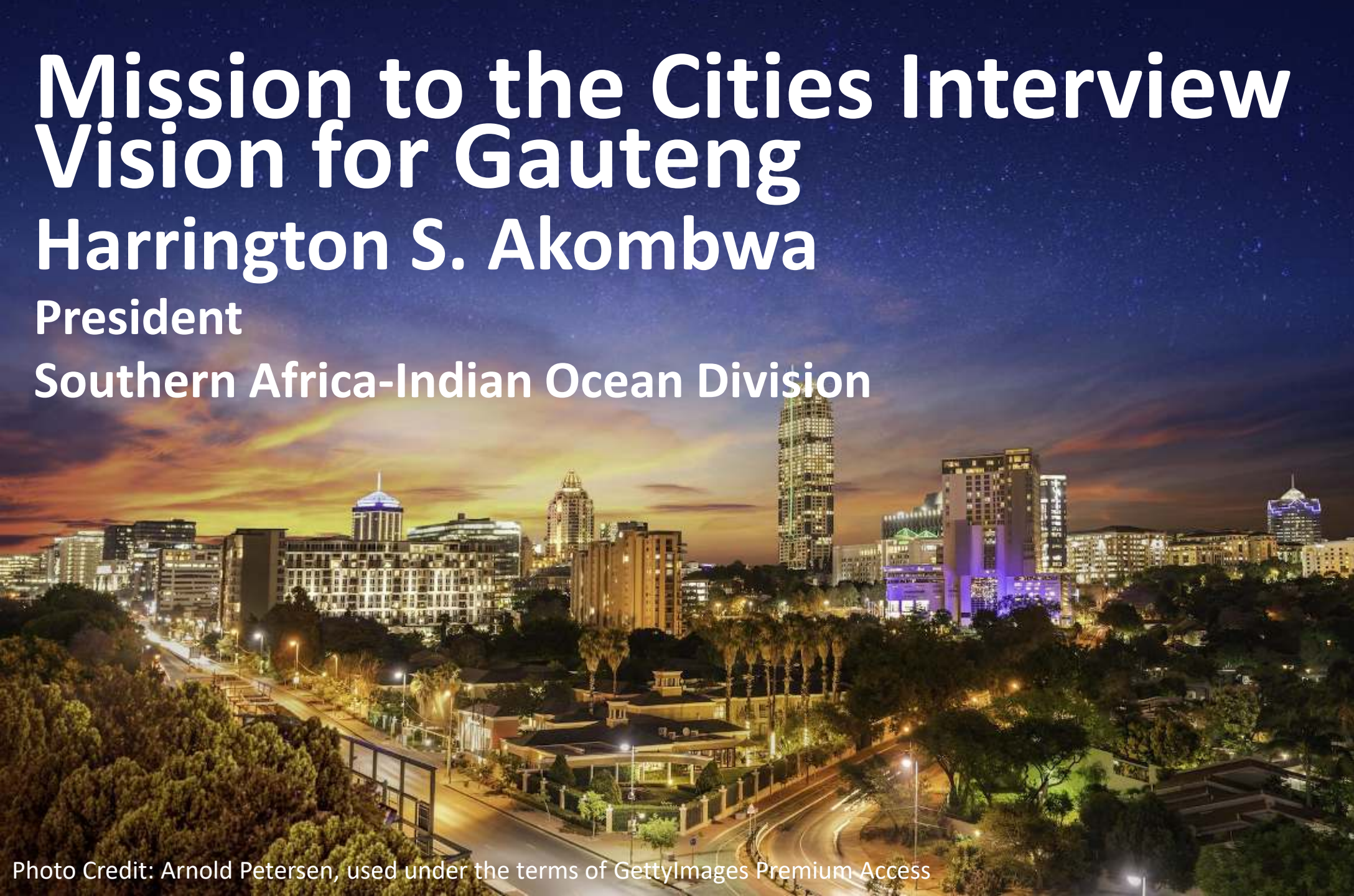


Photo Credit: Arnold Petersen, used under the terms of GettyImages Premium Access





**Do I have Christ's heart for the cities?**

*Flevit super illam* (He wept over it), by Enrique Simonet - Museo del Prado, 1892

Public Domain USA

<https://commons.wikimedia.org/w/index.php?curid=47469507>





**Luke 19:41-44 “. . . He saw the city and wept over it”**

*Flevit super illam (He wept over it)*, by Enrique Simonet - Museo del Prado, 1892

Public Domain USA

<https://commons.wikimedia.org/w/index.php?curid=47469507>





# How will we respond to Christ's call for mission to the cities?

*Flevit super illam* (He wept over it), by Enrique Simonet - Museo del Prado, 1892

Public Domain USA

<https://commons.wikimedia.org/w/index.php?curid=47469507>





*Flevit super illam (He wept over it)*, by Enrique Simonet - Museo del Prado, 1892  
Public Domain USA      <https://commons.wikimedia.org/w/index.php?curid=47469507>



# Mission to the Cities Initiative Report

E. Douglas Venn  
GC Global Mission Urban Center  
GC Annual Council 2022



MISSION to the **CITIES**



Photo Credit: Arnold Petersen, used under the terms of GettyImages Premium Access