



Repeatedly the Lord has instructed us that we are to work the cities from outpost centers.

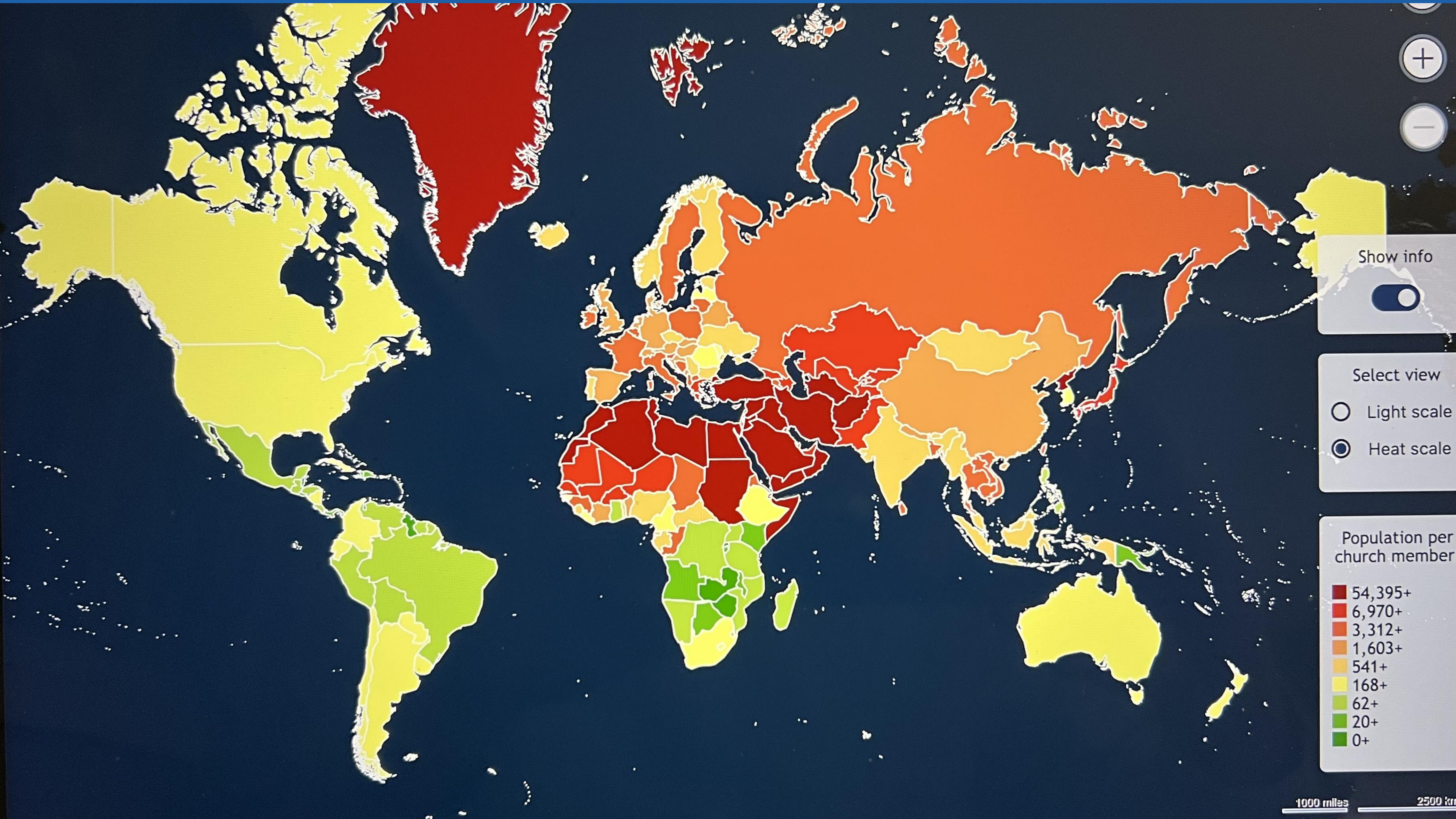
Ellen G. White, 2SM 358.3

Who We Are

A global organization of lay ministries (Centers of Influence) supporting the work of the Seventh-day Adventist Church.

Our Vision

To establish a thriving network of lay ministries(Centers of Influence) in every country of the world



Show info

☒ Heat scale

Select view

☐ Light scale

☒ Heat scale

Population per church member

54,395+
6,970+
3,312+
1,603+
541+
168+
62+
20+
0+

OUR STRATEGIES

INSPIRE

TOTAL MEMBER INVOLVEMENT





LAY MINISTRY CONVENTIONS

2022

BRAZIL –

BOLIVIA –

INDIA -

COLOMBIA –

UNITED STATES – Sept 29 – Oct 2

PHILIPINES– October 20 - 23

CONGO - November 17 - 20

2023

BRAZIL - January 26 to 29

Bolivia – February 2 to 5

RUSSIA - February 22 to 26

COLOMBIA - March 15 to 19 (OCI International Convention)

ZAMBIA - March 30 to April 3

ROMANIA - September 14 to 17

UNITED STATES - September 28 to October 1

MALAYSIA - October

EMPOWER

WE HELP MINISTRIES THRIVE

7 PILLARS OF SERVICE

1



Spiritual

2



Media

3



Training

4



Financial

5



Networking

6



Strategy

7



Consulting

PARTNER

WE CAN DO MORE TOGETHER

OCI FIELD VICE PRESIDENTS



Alain Bautista

Southern Asia-Pacific
South Pacific



Alexey Ostapenko

Euro-Asia



Birendra Ramtel

Southern Asia



Boaz Papendick

West Central Africa



Dosung Kim

South America



Frank Fournier

North America



Jeremy Zwiker

Trans-European



Kim Busl

East Central Africa
Southern Africa-Indian Ocean



Nicolae Dan

Israel Field
Inter-European



Rodney Bowes

Northern Asia-Pacific
China



Serghei Costash

Middle East North Africa



Shanniel Fisher

Inter-America



OCI OBJECTIVE - ALIGN WITH “I WILL GO” STRATEGIC INITIATIVES

I will Go - Mission Objective

OBJECTIVE 1 To revive the concept of worldwide mission and sacrifice for mission as a way of life involving not only pastors, but every church member, young and old, in the joy of witnessing for Christ and making disciples

KEY PERFORMANCE INDICATORS (KPIs) for objective 1

KPI 1.1 Increased number of church members participating in both personal and public evangelistic outreach initiatives with a goal of Total Member Involvement (TMI) Responsible Parties:

OCI has 21 KPI's that are in support of the KPI's in I Will Go

EXAMPLE

Increased number of lay people joining a ministry as a volunteer or starting something of their own. OCI has developed a Mission Revival initiative to focus efforts on this objective.

www.missionrevival.com

HOW THIS WORK STARTED

History of Supporting Ministries



Walla Walla College



Battle Creek College





FOUNDERS OF MADISON



MADISON COLLEGE



ASI was Founded in 1947

**The original name of ASI was
Adventist Self-Supporting Institutions**

OCI Founded in 1983

**To connect and support the growth of
supporting ministries worldwide**

240+ Ministries | 70+ Countries







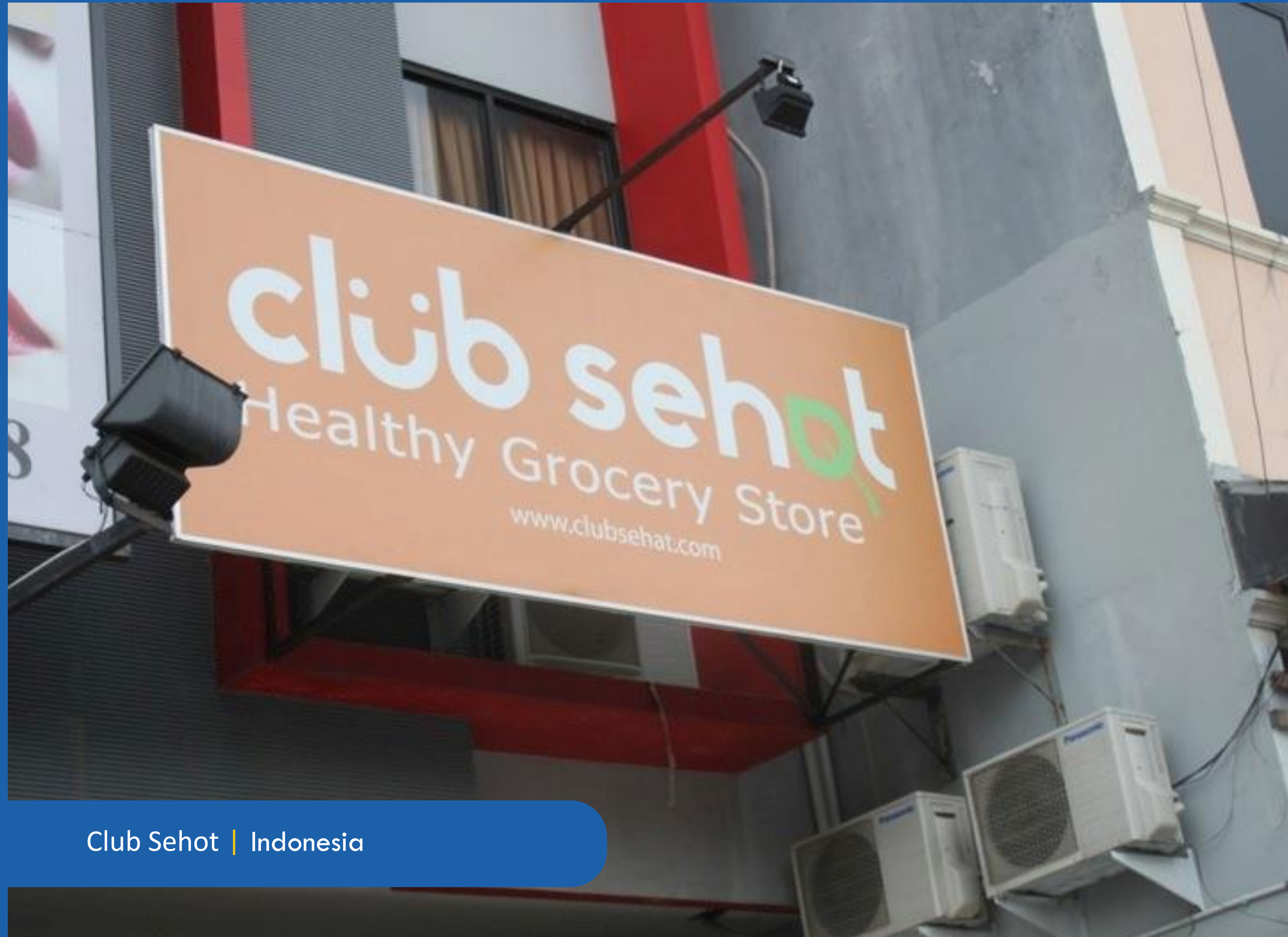






Healing Way | Indonesia





Club Sehat | Indonesia













The Pearl | Kazakhstan



ACCESS | Bulgaria





Advent Relief Medical Care | Iraq







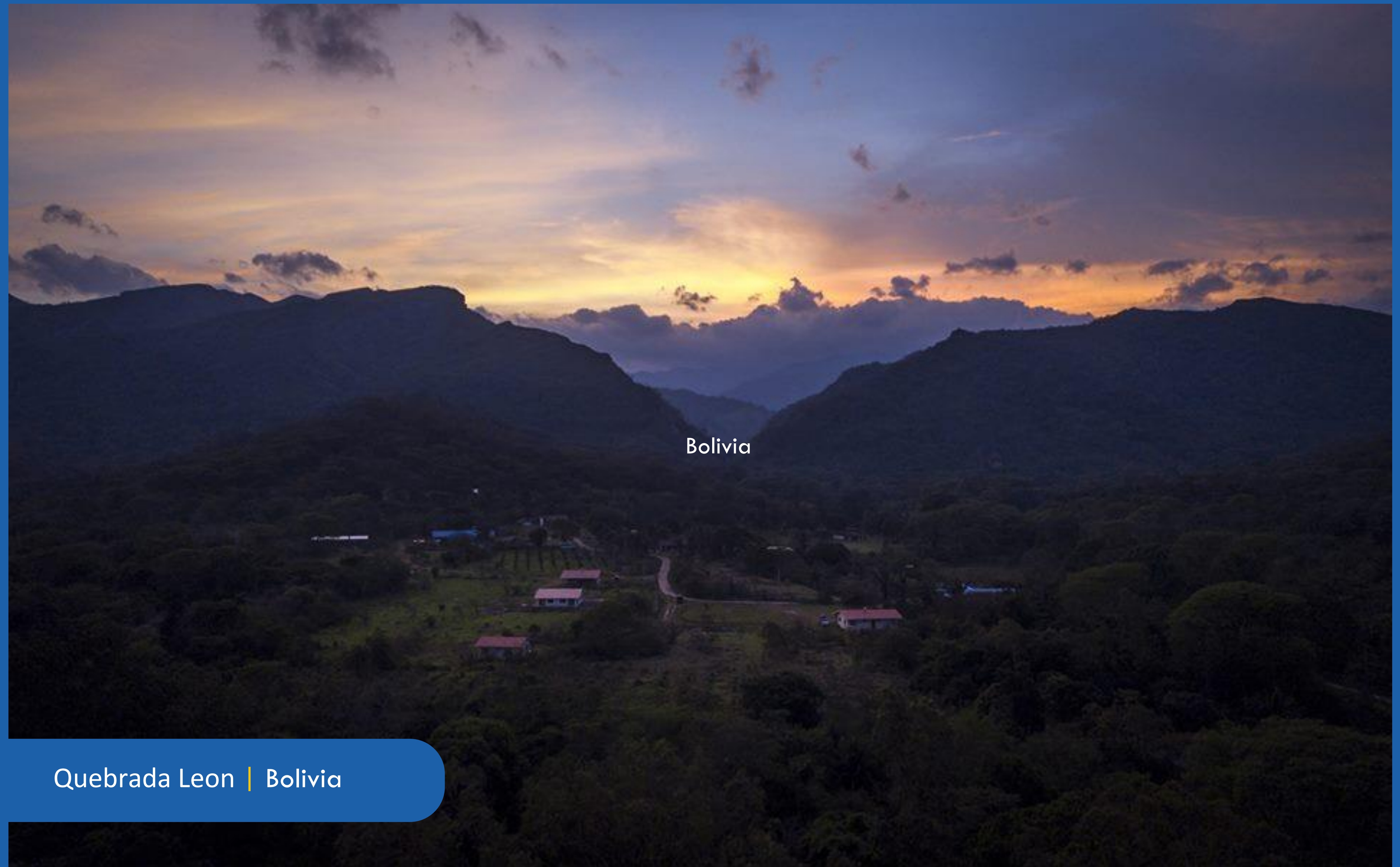




Riverside Farm | Zambia



Riverside | Zambia



Quebrada Leon | Bolivia







Serra do Cipo | Brazil





Our Home | Ukraine





Center for Health & Prevention | Moldova



Herghelia | Romania



Wildwood Health Institute | USA



Uchee Pines | USA



Eden Valley | USA



Landhaus Die Arche | Germany



La Gracia - Home and Heath | Chile



Country Life | Czech Republic



Migdalia Lifestyle Center | Israel



Network 7 | USA

Springs of Life Foundation | Poland



Fredheim | Norway



Mellins Extraknäcke | Sweden



Hyve International | Germany



Sonn matt | Switzerland



Biosalute | Italy



FARM STEW | Uganda



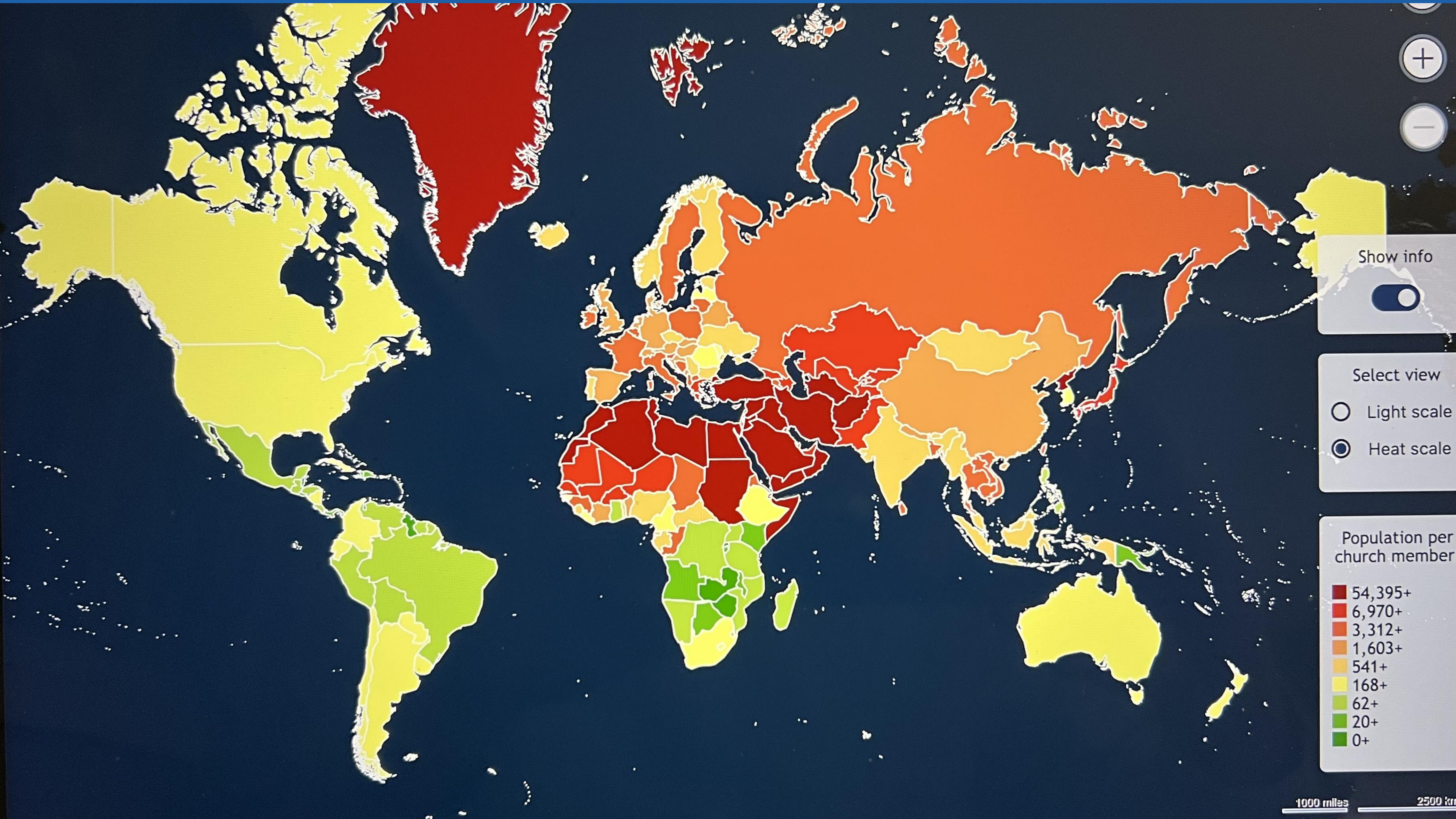
MAJOR INITIATIVES

Inspiring lay people to engage in ministry

Training and sending self-supporting missionaries into low presence countries

Working with member ministries to help them thrive

Using health and business as entering avenues



Show info

☒

Select view

☐ Light scale

☒ Heat scale

Population per church member

54,395+
6,970+
3,312+
1,603+
541+
168+
62+
20+
0+



COMMITMENT

We are committed to helping change the picture



outpostcenters.org

