

**Reaching the World**

**To Think Creation:**

**The First Angel's Message**

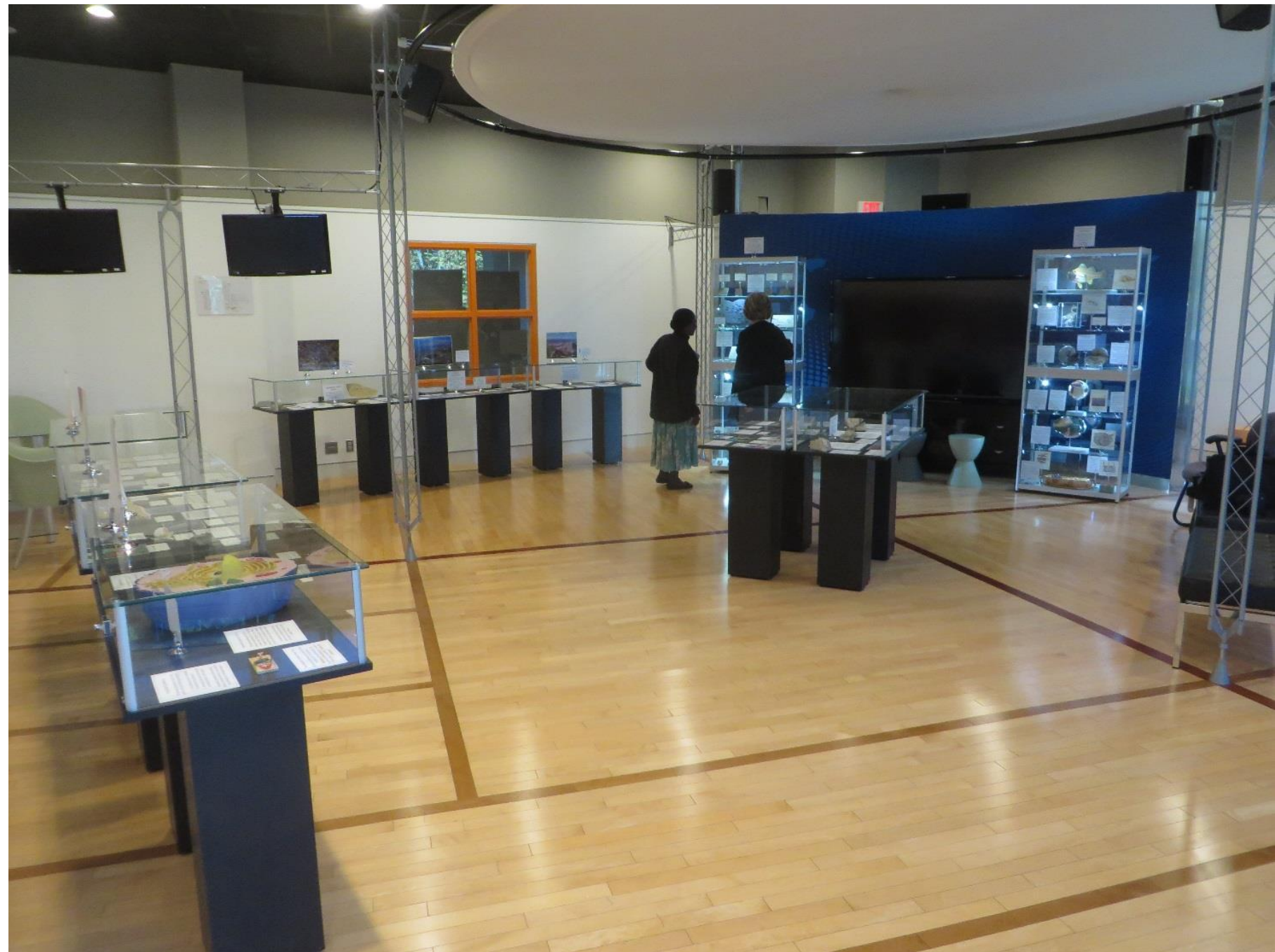
**A Report From**

**The Geoscience Research Institute**



# **Design and Catastrophe**

## **A Display For Annual Council**







# Nature Shows Evidence of Design

The complexity of living cells points to design.

The beauty of natural forms points to design.

The diversity of living things points to design.

Design points to a Designer.

# Nature Shows Evidence of Design

Many scientists have finally concluded that Darwin was wrong when he claimed that diverse organisms were created by natural selection.

(See the latest GRI Newsletter for an important example.)

Those who subject their faith to science will have to change whenever science changes.

# Molecules from Living Things Should Have Decomposed IF The World Is Millions of Years Old



In laboratory experiments, biomolecules generally decompose rather quickly. However, these molecules are sometimes found in fossils claimed to be very old, such as *T. rex*. This suggests the fossils may not be as old as commonly thought.



# Fossiliferous Sediments Should Have Been Eroded Away IF the World is Tens of Millions of Years Old



Present rates of erosion are fast enough to remove all the fossil-bearing sediments from North America in about ten million years, according to some estimates. Yet large amounts of such sediments remain. This suggests the continent may not be as old as is claimed.



# Layering of Sediments Should Be Destroyed by Burrowers IF The Sediments Accumulated Over Millions Of Years



Left: Marine sediments are completely mixed by small animals as they tunnel through them, destroying any layering that might otherwise show.

Right: The presence of bedding in most sedimentary layers indicates they were deposited in a continuous process that did not allow enough time for animals to destroy the bedding.





# Ways GRI Can Partner With You:

## #1. Creation Centers

- GRI would like to partner with you:  
In establishing **CREATION CENTERS** in places such as tertiary educational institutions and Division or Union offices.  
This can encourage faith in the biblical record of creation and the flood among teachers, pastors, students and others.



# North Pacific Union Conference Creation Center

## Dr. Stan Hudson, Director



# Brazil Adventist University Creation Center

## Dr. Marcos Costa, Director





# What Is A Creation Center?

- **A PLACE:** a physical location where displays on creation and science can be seen by the local community.
- **A PERSON:** a manager with a passion for sharing the Church's understanding of biblical creation.
- **A PROGRAM:** an activity at least once a year, with an annual activity report to the GRI Director.
- A creation center is locally funded, but may apply for project funding through the GRI.

# Displays In The GRI Library





# Ways GRI Can Partner With You:

## #2. Creation Sabbath

- GRI would like to partner with you:  
In promoting a special CREATION SABBATH to celebrate and promote biblical creation. This year: October 28.
- See the display in the Visitor Center for ideas.

# Ideas for Creation Sabbath

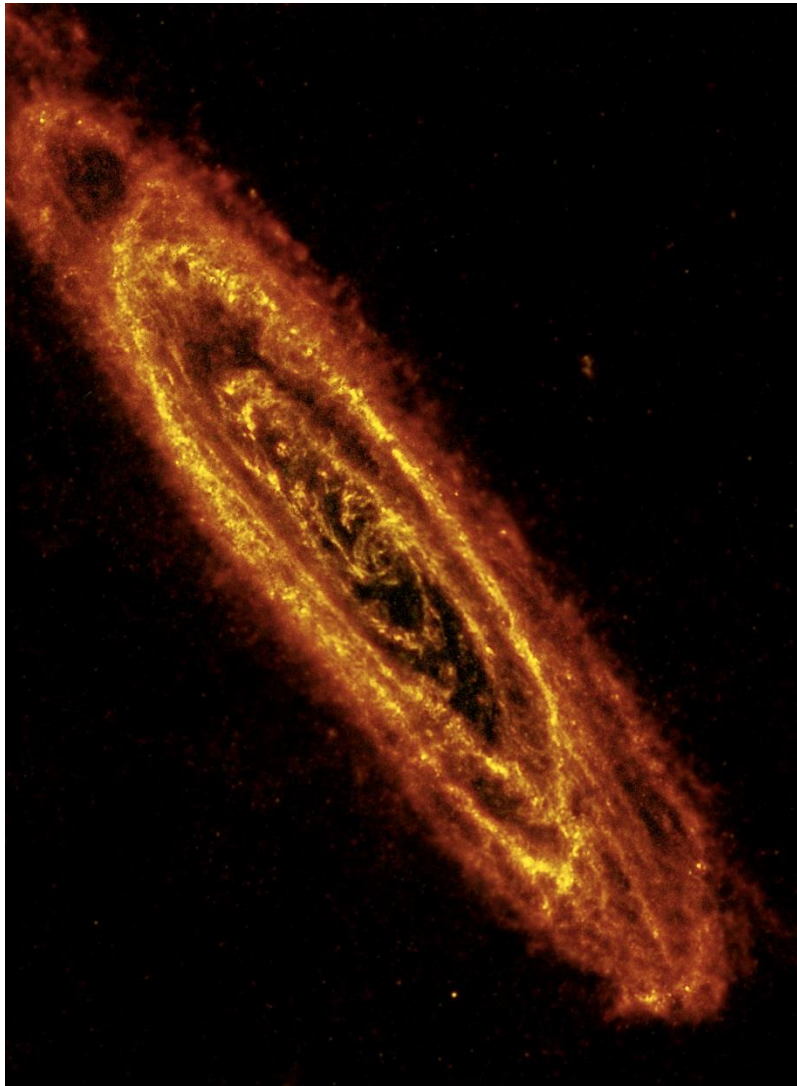
## CreationSabbath.Net



Beauty in Nature

A screenshot of the CreationSabbath.Net website. The browser address bar shows "creationsabbath.net". The website header features the Seventh-day Adventist Church logo and the title "THE CREATION" with the subtitle "PROCLAMATION OF THE FIRST ANGEL'S MESSAGE". Below the header is a large banner image showing two hands holding the Earth against a cosmic background. A navigation bar with orange background contains links: "Why?", "Planning Points", "Resources", "Events", "Links", and a search bar. The main content area has a section titled "The Creation Project" with a description and a "Learn more" button. Below this is an "Introduction" section with a video player showing a sunset over a rocky coastline. To the right, there is a sidebar with a date "October 28, 2017", a "Resources &amp; Downloads" section with a video thumbnail and description, and another video thumbnail at the bottom.



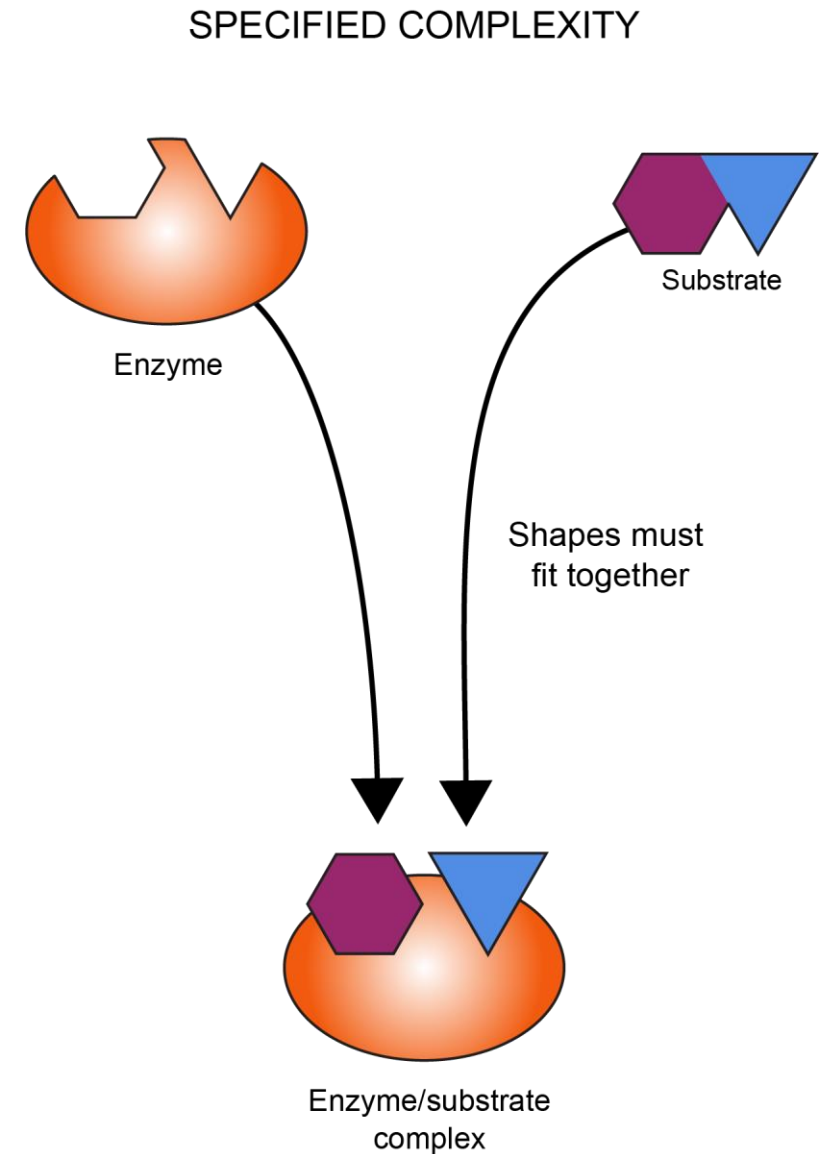


Andromeda Galaxy. Public Domain.

**The Universe:  
Power, Design**

**Creation  
Sabbath  
Themes**

**Design in  
Large and  
Small**



**Molecules of Life  
Design, Complexity**

# Creation Sabbath Themes



Nautilus (Palau); Photo Manuae, own work.

License Creative Commons Attribution Share Alike 3.0.

**Fifth Day Life:**  
**Design, Diversity, Beauty, Stewardship**



# Ways GRI Can Partner With You:

## #3. Mentoring

- GRI would like to partner with you:

In identifying and **MENTORING** graduate students and other scholars who have a commitment to biblical creation and the potential for occupying future positions of leadership.

# Ways GRI Can Partner With You:

## #4. Creation Education

- GRI would like to partner with you:
- In presenting **SEMINARS** on creation and science for meetings of teachers, pastors, and university communities.
- Special creation weekends at universities;
- Short courses for tertiary institutions or continuing education credits for Church workers.





Principals' Meeting, NAD



Church Leaders, EUD



University, ECD

University, SAD

Teachers, TED and EUD

University, IAD





## For Further Information

- Visit our website at **WWW.GRISDA.ORG** [www.grisda.org](http://www.grisda.org)
- Email any staff member or **DIRECTOR@GRISDA.ORG**
- Now: Watch a Short Video on a recent
  - GRI Field Conference